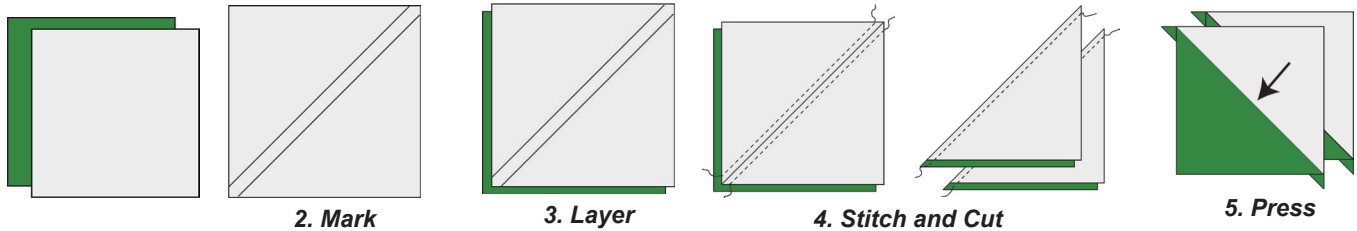
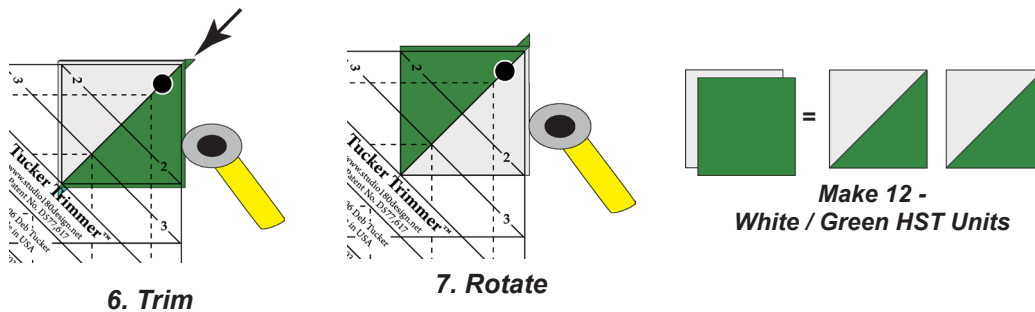


Note: Please remember to read your tool instructions thoroughly before using them.

1. Gather **(6) 2 ½" White / (6) 2 ½" Green** squares.
2. Using your Quilter's Magic Wand **Mark** two stitching lines ¼" on either side of the center diagonal line on the wrong side of **White** squares.
3. With right sides facing, **layer** a **White** square with a **Green** square.
4. **Stitch** on the drawn lines, then **cut** down the middle.
5. **Press** seam in the direction indicated by arrows.



6. **Trim** to **2"** using the **Tucker Trimmer® 1**.
7. **Rotate** the unit 180° and line up the Tucker Trimmer® 1 and trim the two remaining sides to measure **2" cut**.
8. **Repeat** the steps 1-7 above to **make 12 White / Green HST Units**.



9. **Repeat** the steps 2-8 above to make the following HST Units.

Make 4 White / Dark Purple HST Units.

